

ah! Security

ah!security

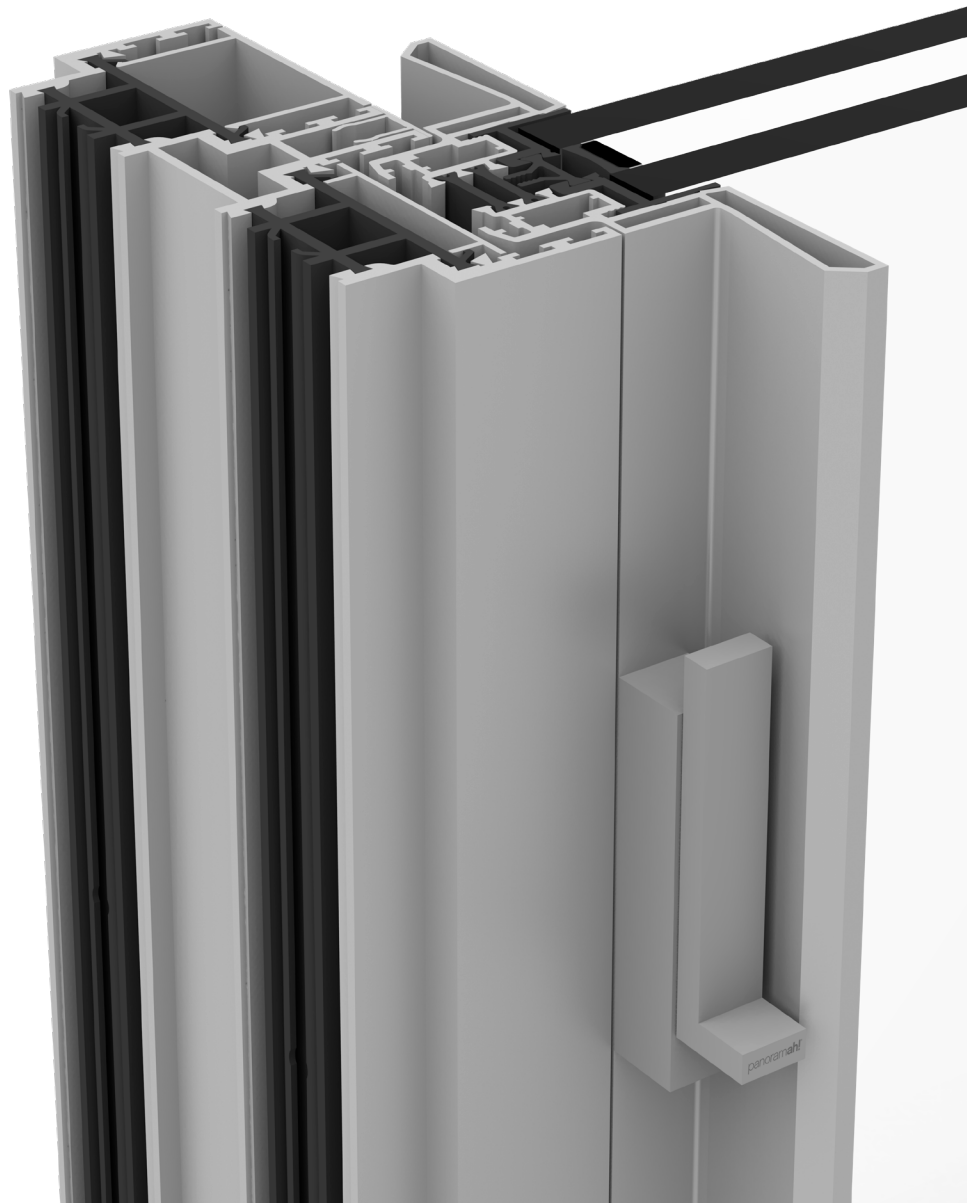
handles and locking devices

The multi-point locking system offers burglar resistance and is approved according to burglary protection up to RC4 / WK4 class. For added security the system can be fitted with an integrated opening and locking monitoring and connected to standard external monitoring systems.

According to system configurations, concealed electric drives and locks can be used to increase operating comfort. Automatic locking (Remote Control, Home Automation Adaptation and Electromagnetic) and manual locking options are available.

Systems such as locking monitors (magnetic contacts), linear actuators, opening and securing cells or code switches complete **panoramah!** range of security accessories and offer enhanced safety.

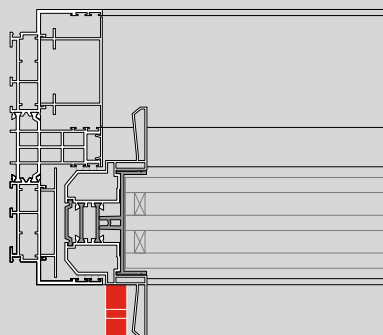
L handle with minimalist key cylinder incorporated (optional). This handle is personalized with **panoramah!**'s logo.



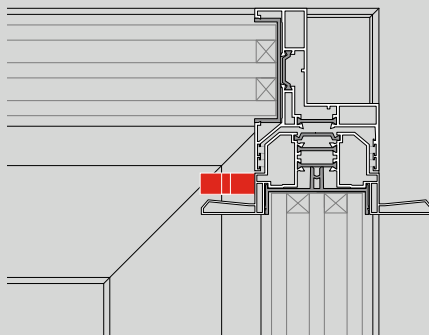
ah!60 security

birail common sections

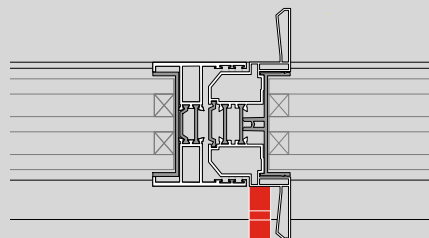
sliding | multipoint | frame



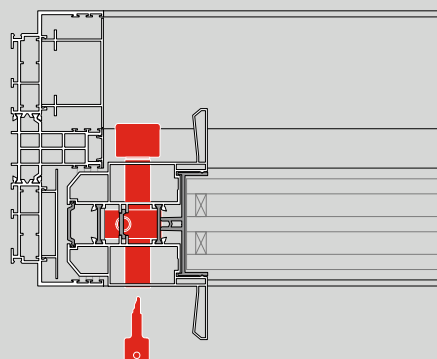
sliding | multipoint | corner



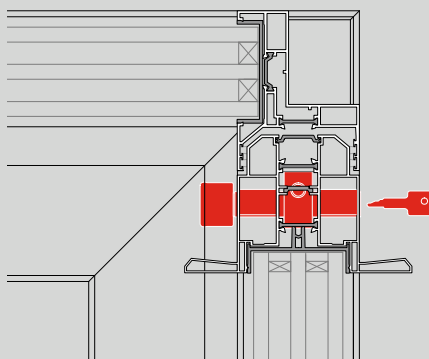
sliding | multipoint | coplanar



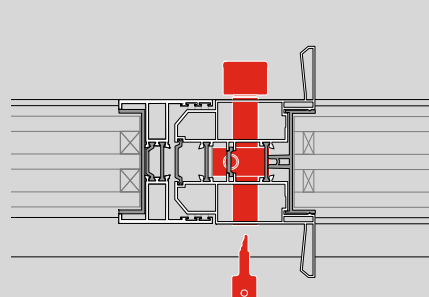
sliding | two points, shootbolt | frame



sliding | two points, shootbolt | corner



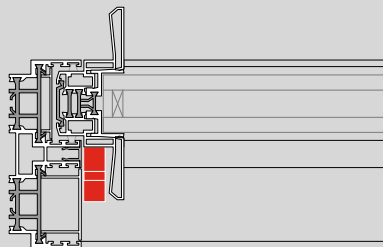
sliding | two points, shootbolt | coplanar



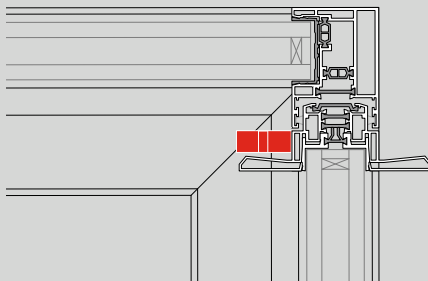
ah!38 security

birail common sections

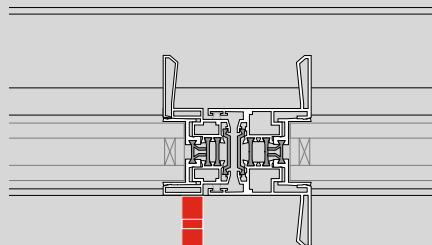
sliding | multipoint | frame



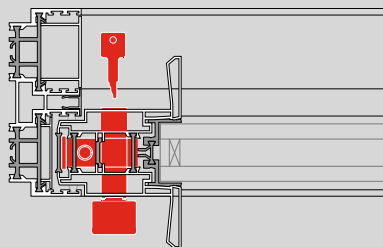
sliding | multipoint | corner



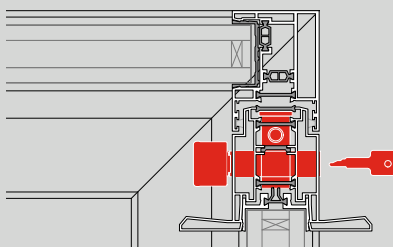
sliding | multipoint | coplanar



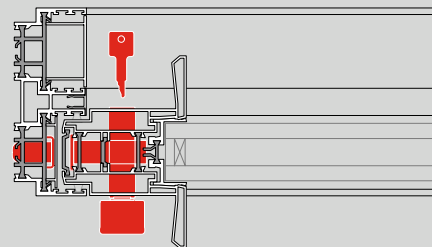
sliding | two points, shootbolt | frame



sliding | two points, shootbolt | corner



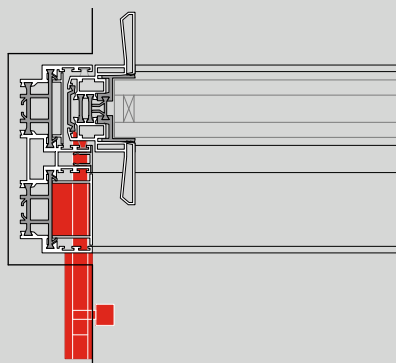
sliding | three points hook | frame



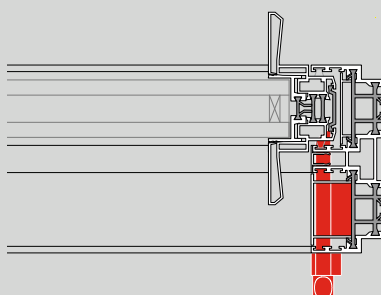
ah!38 security

birail common sections

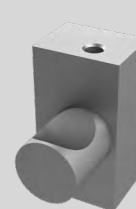
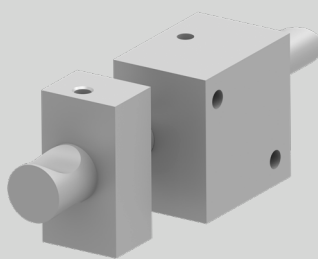
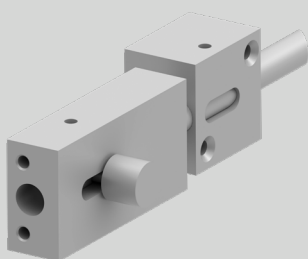
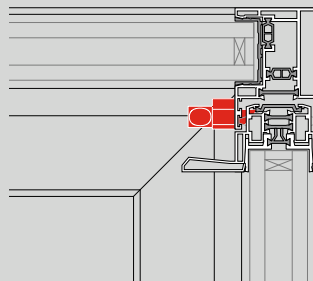
sliding | one point | frame



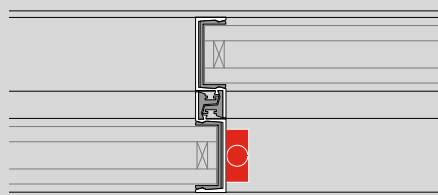
sliding | one point | frame



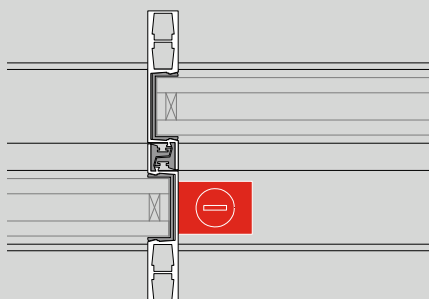
sliding | one point | corner



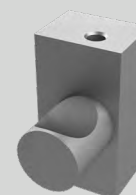
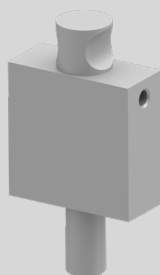
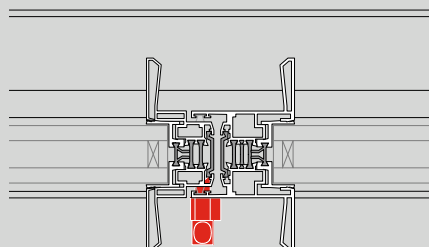
sliding | one point | central mullions



sliding | one point | central mullion



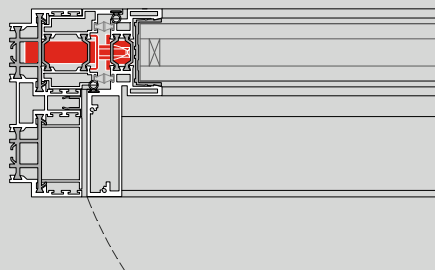
sliding | one point | three point espagnolette handle lock



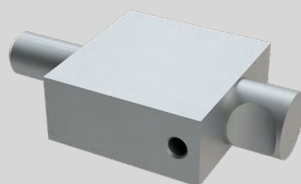
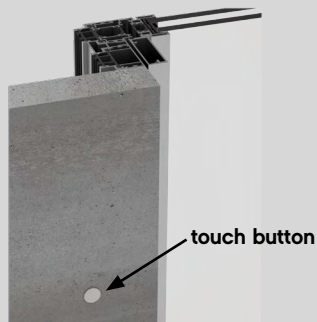
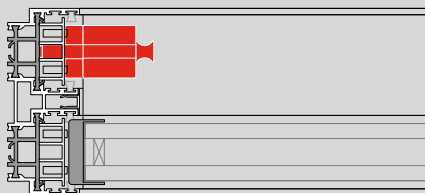
ah!38 security

birail common sections

**pivot | motorised opening and locking |
frame**



vertical sliding | one point | frame



we build **ah!**



unlimited perspective sa
ch philibert-de-sauvage 37
1219 chatelaine
switzerland

p. +41 21 804 1700
f. +41 21 804 1709

info@panoramah.com
www.panoramah.com

facebook
www.facebook.com/panoramah.ch/

instagram
www.instagram.com/_panoramah_/